

PRIME RENTALS



HIRE INDUSTRY
EXCELLENCE
AWARDS
RENTAL COMPANY OF
THE YEAR 2015 - **WINNER**

CAPABILITY STATEMENT



PRIME QUALITY | PRIME SERVICE | PRIME RENTALS

ABOUT US

Prime Rentals provide hire equipment throughout Australia and Pacific Islands to the construction, industrial, maintenance, civil, mining, oil and gas industries. Prime Rentals has a strong and proven track record of delivering smart hire solutions that focus on quality, safety and service at competitive prices. As a testament to this service Prime Rentals were awarded the HRIA Rental Company of the Year Award for 2015.

Prime Rentals' range of equipment is second to none in the industry for dependability and reliability, resulting in time and money savings for you. Prime Rentals has expanded its range of equipment to suit the developing customer base. If you require equipment to get the job done right the first time, talk to one of Prime Rentals friendly consultants to find a solution to suit your needs.

Prime Rentals operational fleet is built on the strength of some of the world's largest equipment manufacturers, offering you quality products for the job. With Prime Rentals quality philosophy being based on utilising the best equipment, the best processes and the best personnel to achieve results, you are guaranteed satisfaction with the products and services on offer.



MISSION STATEMENT

Prime Rentals is committed to sustainable growth through strategic leadership in areas of financial management, safety, operations, the environment and human relations.

We aim to:

- Provide our clients with quality products and services to meet their expectations.
- Nurture and encourage our people to reach their potential through training, knowledge, team work, experience and professionalism.
- Maintain a culture of continual improvement in an environment of open and honest communication in all dealings.

HISTORY

Prime Rentals has experienced tremendous growth in recent years since establishing in 1995 and are now one of Queensland's largest family owned rental fleets with established branches based in Blackwater, Bowen, Brisbane, Emerald, Gladstone, Mackay, Moranbah, Rockhampton, Roma and Wandoan. Prime Rentals offers a range of short and long term hire options to suit your requirements with a large range of equipment for hire or sale at competitive rates.

OUR VALUES

At Prime Rentals, we believe:

- In quality and consistent Leadership.
- In fairness, equity, and respect toward all others.
- In providing a safe and secure environment for all stakeholders.
- We all share responsibility for the success of our team and for the company as a whole.
- Our positive work culture achieves sustained professionalism and commitment to our clients.

Our core business philosophies and values have remained constant since the commencement of our business. We firmly believe our conduct as a responsible and ethical trader has underpinned much of our success over time.

SERVICES

Prime Rentals are renowned for having quality equipment, exceptional service and competitive pricing to save you time and money. We provide experienced and highly trained personnel to offer you a hire equipment solution to satisfy all of your requirements. Our experience is focused through numerous core capabilities including pre-planning of site requirements and safety assessments, short term, ad-hoc and long term hire, equipment servicing, project management, project equipment analysis, fit for purpose equipment selection and continual assessment of the projects ongoing requirements. Your project will be safer and more productive with Prime Rentals equipment and maintenance services.

SERVICE DELIVERY

- Pre-planning of site requirements and safety assessments.
- Project Management of client requirements.
- Short term or ad-hoc equipment supply.
- Long term equipment supply and management.
- Project equipment analysis.
- Fit for purpose equipment selection.
- Continual re-assessment of the project ongoing requirement.

SERVICE SUPPORT

- Equipment maintenance programs and pre-hire equipment inspections drives service reliability and minimises downtime.
- Responsive field service and in-house technical, mechanical and electrical support.

LOGISTICAL MANAGEMENT

Prime Rentals combine in-house transport services with that of a select group of subcontractors to manage equipment transport to meet project requirements. The equipment fleet can be quickly mobilised and easily relocated within Prime Rentals branch network, to meet large and long-term projects.

PROJECT MANAGEMENT

Prime Rentals skilled team will provide onsite inspections to minimise project risk and any potential delays. This will review areas such as; site access, height restrictions, entry and exit plus working surface limitation on your project.

FIT FOR PURPOSE EQUIPMENT

By working closely with the client, Prime Rentals can provide equipment solutions that will provide the most economical outcome, while at the same time meeting all project timelines. Equipment selection and recommendation is our business!

FIELD SUPPORT

Prime Rentals are available 24 hours a day, 7 days a week to react promptly to unforeseen project changes, breakdown, damage or additional requirements to meet project progression.

PROJECT IMPROVEMENT

For long-term periodical projects, such as shutdown contracts, Prime Rentals will review asset management to continually improve equipment optimisation, so as to deliver greater value to clients on current and future projects.



**HIRE INDUSTRY
EXCELLENCE
AWARDS**

RENTAL COMPANY OF THE YEAR 2015 - WINNER

RENTAL COMPANY OF THE YEAR

Prime Rentals has been awarded the prestigious title of HRIA 2015 'Rental Company of the Year'.

The HRIA is the peak national industry body representing the hire and rental industry in Australia and the recent award by the prestigious authority is the result and recognition of the achievements and maturity of Prime Rentals as a company, made possible by the great efforts of the experienced and dedicated staff.

The award is also testament to the continuous improvement Prime Rentals undertake to always offer the best quality, service, product and price to ensure clients a complete hire solution to satisfy all their requirements.



OUR VISION

We are the leader in equipment hire, consistently delivering quality products and services and recognised by our clients as the "Company of Choice".

LOCATION

Prime Rentals are well positioned with hire and workshop services, which are supported by well managed field maintenance teams and a select group of specialist contractors to service all equipment in the field, regardless of the location.

Prime Rentals hire and service workshops are located in the following areas within Queensland, ensuring Prime Rentals can service an area near you.



PRODUCT MATRIX

Prime Rentals provide hire equipment solutions throughout Queensland with a focus on quality, safety, service and price to the mining, industrial, construction, building, maintenance, oil, gas, and civil industries. Our equipment ranges from, but is not limited to:



SKID STEER LOADERS



TOOL STORES



BOOM LIFTS



LIGHTING TOWERS



MESSAGE BOARDS



EXCAVATORS



GENERATORS



TEMPORARY FENCING



TELESCOPIC HANDLERS



RIGGING EQUIPMENT



COMPRESSORS



SCISSOR LIFTS



PUMPS



WELDERS



FORKLIFTS

PRODUCTS

Prime Rentals have grown industry involvement and reputation, through recruitment of highly skilled personnel and the procurement of over \$60 million dollars of specialised equipment to meet market demands.

With the financial stability and determination to support long term cost management strategies and a proven reputation across the relevant industries for having a 'can do' attitude, high-quality of service and a large, modern fleet of well-maintained equipment, you needn't look further than Prime Rentals for a complete hire equipment solution.



BOOM LIFTS - ARTICULATED DIESEL

Prime Rentals offers a wide range of Articulated Booms for hire with platform heights from 34'(10.6m) – 135'(41.5m) that can be manoeuvred above, horizontal to, or below ground level.

BOOM LIFTS - ELECTRIC

Used where zero emissions are required. Used for all types of maintenance work and construction.

BOOM LIFTS - TELESCOPIC DIESEL

Telescopic Diesel booms allow you up, down or straight movements out from ground level. Prime Rentals has Telescopic Diesel booms with platform heights ranging from 45'(13.7m) – 185'(56.7m) in stock.

SKID STEER LOADERS

Prime Rentals versatile skid steer loaders offer top-of-the-range power, visibility, fuel efficiency and ease of operation and maintenance. These skid steer loaders are ideal for confined areas and offer the ultimate balance between lightweight agility and heavyweight ability.

TELESCOPIC HANDLERS

Telehandlers are designed for construction and building sector applications; Prime Rental's range offers lifting heights up to 56'(17m). Assorted attachments are available.

FORK LIFTS

Forklifts ranging from 1.8t to 16t and available in LPG, diesel or electric. Ideal for lifting pallets and heavy loads, stacking in warehouses, loading and unloading trucks. Used in workshops, warehouses or rough terrain.

LIGHTING TOWERS

Lighting towers are sound reduced for quiet operation, with hydraulic mast operation for easy and safe deployment. They have large fuel tanks for uninterrupted use and are available in LED and metal halide up to 24000 watts.

GENERATORS & ACCESSORIES

Our portable generators have silenced canopies for quiet operation, large fuel tanks for uninterrupted use, multiple outlet configurations for different connections and earth leakage protection providing increased electrical safety and reliable operations.

RIGGING EQUIPMENT

Prime Rentals offers a wide range of rigging equipment including chain blocks, cummalongs, slings, tirlors, harnesses, air hoists, clamps and trolleys.

COMPRESSORS

Our compressors range in size from 14 cfm to 1050 cfm High pressure units. Most units are also fitted with after-cooling.



SCISSOR LIFT - ELECTRIC

Quiet, clean & versatile, Electric Scissor Lifts are ideal for indoor and slab work applications. Used for construction and maintenance work.

SCISSOR LIFTS - DIESEL

Rough terrain scissor lifts are excellent for high reach work particularly in uneven outdoor conditions. Our range of rough terrain scissor lifts are fitted with outriggers, manual and self-levelling functions which are mandatory when working on difficult ground conditions.

SHUT DOWNS AND TOOL STORES

Our Tool Management System (TMS) provides our clients with a secure and simplified - tool management system for their shutdown and outage projects. TMS will improve productivity by using an innovative voice confirmation barcode system developed to control the movement of tooling and equipment.

WELDERS - DIESEL

We have units that provide 240V single phase and three phase 415V auxiliary power up to 18kVA which can be used to run small motors, power tools, lighting and domestic appliances. Wire feeders and remotes can be added to most machines.

WELDERS - ELECTRIC

We stock a wide range of portable electric welders for construction, resource, industrial or workshop. Variable duty cycle and current flows including up to a maximum of 600 amps. Used for a variety of welding processes, including Stick, Mig Flux Core, Tig and Arc Air Gouging.

PUMPS

Prime Rentals offers a wide range of pumps including submersible, flex drive, trash, transfer, diaphragm, open canopy and rapid response silenced pumps. Hoses and accessories available.

EQUIPMENT HIRE SERVICES

- Innovative Rental Solutions
- Safety & Industry Compliance
- Complementary Site Audits
- Extensive Equipment Range
- 24/7 Technical Support
- Operational Flexibility
- Customised Tool Stores
- Integrated Onsite Facilities
- Bar Coded Asset Tracking
- Highly Qualified Technicians
- Tailored Shutdown Packages
- Onsite & Workshop Servicing
- Customers Equipment Servicing

PROJECT OVERVIEW

Our experience is focused across the following core capabilities:

- Pre-planning of site requirements and safety assessments.
- Mine site shutdown work.
- Short term and ad-hoc equipment hire.
- Long term equipment hire.
- Onsite equipment servicing.
- Project management.
- Project equipment analysis.
- Fit for purpose equipment selection.
- Continual assessment of the project's ongoing requirements.



RECENT PROJECTS

WIGGINS ISLAND COAL EXPORT TERMINAL

Client: John Holland, Abby Golding, MCJV, Sun Engineering, Wicet Group

Duration: 3 yrs

Location: Wiggins Island and various mainland locations

Scope of Work:

- Planning and supplying of access equipment EWP's, folklifts, generators, small tooling and telehandlers for construction and maintenance purpose.
- Maintaining and servicing the above equipment.

APLNG PROJECT CURTIS ISLAND

Client: John Holland, Bechtel, CB&I, Walz Group, MCJV,

Duration: 3 yrs

Location: Curtis Island and various mainland locations

Scope of Work:

- Planning and supplying of access equipment EWP's, folklifts, generators, small tooling and telehandlers for construction and maintenance purpose.
- Maintaining and servicing the above equipment.

APLNG PIPELINE COMPRESSION FACILITY

Client: Origin Energy

Duration: 7 months

Location: Spring Gully

Scope of Work:

- Supplying of all the Earthworks Package-excavators, watercarts, tippers, skidsteers, possietracks, trench rollers and 16 tonne rollers
- Supplying equipment required for construction – EWP's, generators, welders, flex gear, pumps, lighting towers, tele-handlers, site fencing, crowd control barriers, plus the supply of a full time fitter on site.

INDUCTIONS

COMPLETED STAFF INDUCTIONS

- BMA
- QGC
- Anglo
- Origin
- CPB
- NRG
- Curragh
- QNP
- MPC
- Santos

RECENT PROJECTS

TALINGA PROJECT

Client: Monadelphous

Duration: 6 Months

Locations: Talinga

Scope of Work:

- Supply of hire equipment to build a gas compressor station. Including EWP's, generators, light towers, welders, pumps, tele-handlers, site fencing, crowd control barriers and general hire equipment

CAVAL RIDGE MINE CONSTRUCTION

Client: Thiess, Monadelphous, G&S Engineering, Lendlease, Bechtel

Duration: 18 months

Location: Moranbah

Scope of Work:

- Planning, Mobilization, Demobilization and Compliance.
- Servicing of a huge range of hire equipment such as generators, welders, EWP's, tele-handlers, torklifts, lighting towers, temporary tencing, water trailers, fuel pods and more.

QCLNG PROJECT CURTIS ISLAND

Client: John Holland, Bechtel, CB&I, Walz Group, MCJV,

Duration: 3 yrs

Location: Curtis Island and various mainland locations

Scope of Work:

- Planning and supplying access equipment for construction and maintenance purposes. Including EWP's, folklifts, generators, small tooling and tele-handlers
- Maintaining and servicing the above equipment.

GLNG PROJECT CURTIS ISLAND

Client: John Holland, Bechtel, CB&I, Walz Group, MCJV

Duration: 3 yrs

Location: Curtis Island and various mainland locations

Scope of Work:

- Planning and supplying access equipment for construction. Including EWP's, folklifts, generators, small tooling and telehandlers.
- Maintaining and servicing the above equipment.

PAST PROJECTS



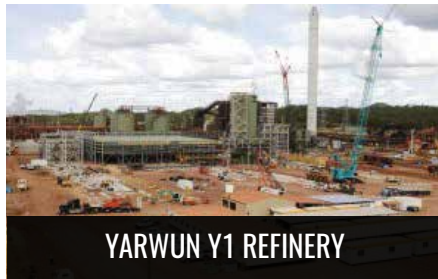
Client: Rio Tinto

Duration: 18 months

Location: Nebo, 120 kms southwest of Mackay, central Queensland

Scope of Work:

- Supplying of plant and equipment such as EWP's, generators, lighting towers and compressors for maintenance purpose.
- Servicing the above equipment.



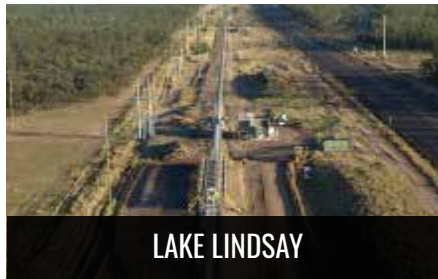
Client: Rio Tinto

Duration: 2 years

Location: Yarwun, Gladstone QLD

Scope of Work:

- Planning and supplying of plant and equipment such as EWP's, forklifts, material handlers and industrial equipment for construction and maintenance purposes.
- Maintaining and servicing the above equipment.



Client: Anglo American

Duration: 18 months

Location: Middlemount QLD

Scope of Work:

- Supplying of plant and equipment such as lighting towers, EWP's, generators etc.
- Servicing the above equipment.



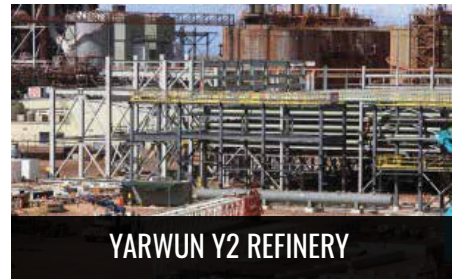
Client: DBCT Pty. Ltd

Duration: 2 years

Location: Dalrymple Bay QLD

Scope of Work:

- Supplying of plant and equipment such as EWP's, forklifts, generators, lighting towers and compressors for maintenance purpose.
- Servicing the above equipment.



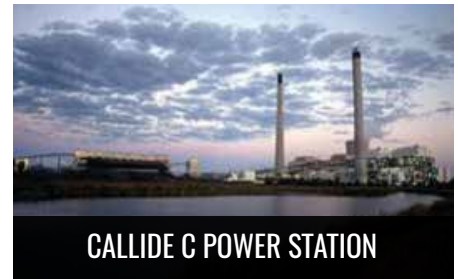
Client: Rio Tinto

Duration: 3 years

Location: Yarwun, Gladstone QLD

Scope of Work:

- Planning and supplying of plant and equipment such as EWP's forklifts, material handlers and industrial equipment for construction purposes.
- Maintaining and servicing the above equipment.



Client: C.B.H and CLP

Duration: since 2003 for 2 years

Location: Biloela, QLD

Scope of Work:

- Supplying of plant and equipment such as forklifts, EWP's, generators and compressors etc.
- Servicing the above equipment.

SAFETY

Zero-harm focused on best practice programs.
Highly trained and experienced operators.
Alignment with all onsite or customer safety guidelines.
Familiarisation in the safe operating procedures of all equipment.

Onsite safety starts with compliance. This means a standard where all site personnel recognise an operating procedure unique in some cases to that particular company or site. Prime Rentals also recognises the need for site compliance and welcomes any opportunity to minimise risk and increase operator awareness. We accept that this can come at a cost to Prime Rentals, but it is part of the bigger picture when making a commitment to a client.

The reduction of suppliers through onsite facilities dramatically reduces the possibility of incidents onsite through equipment compliance and a standard which overtime will raise expectations of what is not only available, but expected in the hire industry. It also has the potential to eliminate the inefficiencies of managing the inductions, movements and communication of multiple contractors, their subcontractors, suppliers and equipment to also reduce operating costs.

SAFETY ACCREDITATION

Prime Rentals is heavily focused on safety and as such, maintains accreditation through USAFE Australia and is an "Approved Contractor" under the HSECQ Management System.

This provides Prime Rentals with a greater appreciation of our requirement in minimising Loss Time Injuries (LTI's) and the overall safety and well-being of all staff and personnel to keep your job running on time and to budget.



QUALITY

Prime Rentals has developed and implemented a Quality Management System ISO9001:2008 in order to document the company's best business practices, better satisfy the requirements and expectations of our customers and to improve the overall management of the company.

Prime Rentals' industry-trained personnel interact at varying client levels to ensure our complete understanding of your business requirements and project timelines to deliver the equipment you require, saving you time and money.

Prime Rentals has a strategic equipment replacement program, so ongoing discussion with you, our client, is crucial to the planning of fleet purchases and upgrades.



COMMUNITY

With branches in Blackwater, Bowen, Brisbane, Emerald, Gladstone, Mackay, Moranbah, Rockhampton, Roma and Wandoan, Prime Rentals are proud to be actively supporting their local communities. Prime Rentals have an active interest in the well being of their communities and continue to show commitment through sponsorship, in kind contributions and community involvement. Below are a few examples of Prime Rentals community support.



MAKING A DIFFERENCE TO QLD CHILDREN IN NEED! - VARIETY QLD

Prime Rentals have raised more than \$2000 for Variety QLD by switching their fleet of cars to QBE's CTP Insurance. General Manager of Prime Rentals, Joe Austin, said that "We are proud to support this brilliant QBE initiative again in 2015 and by doing something so simple we can make a real difference to the disadvantaged children of QLD and their families".

Prime Rentals continue to support the children's charity by committing to support Variety Queensland in 2015 as the main beneficiary. Prime Rentals support of Variety QLD goes towards assisting children who are sick, disadvantaged or have special needs to live, laugh and learn.



YULEBA MARATHON AND FUN RUN 2015 - HELP KIDS LIKE NICK CHARITY

Prime Rentals were proud to support the Yuleba Marathon and Fun Run in 2015 with in-kind donations of equipment.

The Yuleba Marathon and Fun Run was a wonderful success raising almost \$50,000 much needed funds for the Help Kids like Nick Charity. The monies raised from this event will provide financial assistance for mobility equipment, therapy, respite care and lifestyle support for families, children and young adults around Australia affected by Wolf Hirschhorn Syndrome.



PRIME RENTALS SPONSORING MULTIPLE SPORTING CLUBS

Prime Rentals are very proud sponsors of numerous sporting clubs including the Mackay City Hawks Football Club, Gladstone Golf Club, Emerald Go Cart Club, Mackay Cricket Day, Mackay Karate Club, Emerald Eagles Football Club, LCR Running Club and Birch Racing Team – just to name a few!

Prime Rentals support of these sporting clubs assists in upgrades to equipment, uniforms and fees associated with the sports.



GLADSTONE – HEAD OFFICE

4 George Mamalis Place, Gladstone, QLD 4680

Phone: (07) 49768 100 | Fax: (07) 49727 466 | Toll Free: 1800 6 PRIME (1800 6 77463)

Email: gladstone@primerentals.com.au

BLACKWATER

10 Littlefield St

Blackwater, QLD 4717

Phone: (07) 4986 8701

Fax: (07) 4987 4340

Email: blackwater@primerentals.com.au

BOWEN

18 Hermans Road

(via Collinsville Rd)

Bowen, QLD 4805

Phone: 0408 737 601

Email: bowen@primerentals.com.au

BRISBANE

81 Norbury Street

Coopers Plains

Brisbane, QLD 4108

Phone: (07) 3216 7653

Fax: (07) 3255 6592

Email: brisbane@primerentals.com.au

EMERALD

1 Richards Court

Emerald, QLD 4720

Phone: (07) 4987 4000

Fax: (07) 4987 4340

Email: emerald@primerentals.com.au

MACKAY

42 Michelmores Street

Paget Industrial Estate

Mackay, QLD 4740

Phone: (07) 49525 378

Fax: (07) 4952 3992

Email: mackay@primerentals.com.au

MORANBAH

8 Long Pocket Road

(via Railway Road)

Moranbah, QLD 4744

Phone: 0400 737 801

Email: moranbah@primerentals.com.au

ROCKHAMPTON

22 Power Street

Kawana QLD 4701

Phone: 0417 453 595

Email: rockhampton@primerentals.com.au

ROMA

Lot 5, 73 Beaumont Drive

Timber Hills Industrial Estate

Roma, QLD 4455

Phone: (07) 4622 1832

Fax: (07) 4622 8706

Email: roma@primerentals.com.au

WANDOAN

15 Zupp Road

Wandoan Qld 4419

Phone: 0418 873 537

Fax: 07 4622 8706

Email address:

wandoan@primerentals.com.au